



July-September 2024

Pleasanton Garbage Service Inc.

# Residential News

## Zero Waste Essentials

Cut back on waste by adding these 5 tips to your routine!



## Compost vs. Garbage Disposal

One way you can help the environment is by choosing to compost your food scraps instead of putting them down the garbage disposal.

Food scraps contain a high amount of nitrogen. Excess nitrogen is harmful to aquatic life. This means that putting food scraps down your garbage disposal can negatively impact our waterways.

Hard materials such as eggshells, fruit pits, and bones can damage your garbage disposal. Additionally, putting food scraps down your garbage disposal can lead to costly plumbing blockages.

So in order to help the environment and prevent damaging your plumbing, please utilize your PGS green waste cart to compost your food scraps.



## Pleasanton's Free Compost Hub

The City of Pleasanton is piloting a self-haul compost program that offers free compost for Pleasanton residents to pick up every Friday-Sunday, from 8:00 a.m. – 5:00 p.m., as weather conditions and availability permits.

Please Note: The compost is available first-come, first-served and City staff cannot guarantee availability of compost.

Staff are not available on site. Please bring your own shovel and container to collect compost.

The site will close during periods of rain or post rain conditions. For more information, visit [www.cityofpleasantonca.gov/your-community/garbage-recycling/free-compost-hub/](http://www.cityofpleasantonca.gov/your-community/garbage-recycling/free-compost-hub/).



P.O. Box 399 Pleasanton, CA 94566 • 3110 Busch Road, Pleasanton CA, 94566 • (925) 846-2042

[www.PleasantonGarbageService.com](http://www.PleasantonGarbageService.com) • [info@pleasantongarbage.com](mailto:info@pleasantongarbage.com)

Printed on recycled paper

## Tips for Preventing Flies

It's the time of year for warm summer weather - which unfortunately also means flies. Flies are a nuisance, but they can also transmit diseases. When flies consume material containing pathogens they can transmit those pathogens to other areas. Flies are attracted to putrefying materials including dog waste, which often contains pathogens. Importantly, dog waste should never be placed into your green waste/organics cart because of the pathogens it contains. Please bag it and place it in your garbage cart.



Flies are attracted to residential waste collection carts and will lay their eggs in your carts when given the opportunity. Please keep your cart lids closed at all times to prevent flies from accessing them.

Fallen fruit is a favorite of flies which are attracted to sugar. Clean up any fallen fruit from your yard at least twice a week to prevent flies from breeding in the area. Fallen fruit should be placed into your compost/green waste cart.

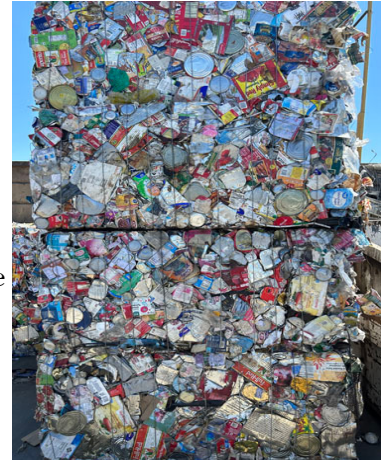
Backyard composting in a properly designed pile is a great way to manage food waste without attracting flies. Flies are not able to reproduce in a healthy compost pile. Compost also makes a wonderful soil amendment for your garden.

## The Importance of Recycling Food and Beverage Cans

Recycling helps conserve landfill space by keeping materials out of the landfill. But did you know how much energy recycling can save?

Using recycled aluminum to make new aluminum cans reduces energy use and greenhouse gas emissions by over 80% compared to manufacturing aluminum cans from raw material.

This is because mining for bauxite ore, the raw material that aluminum is made from, is a highly energy intensive process. Similarly, manufacturing steel and tin cans from raw material is a highly energy-intensive process.



Using recycled steel to make new food cans reduces energy use and greenhouse gas emissions by 78% compared to manufacturing food cans from virgin steel.

Please do your part to keep food and beverage cans out of the garbage/landfill and place them in your blue-lidded recycling cart so PGS can recycle them.

## Aluminum Recycling Facts

- 350,000 aluminum cans are produced every minute. That is over 80,000,000,000
- aluminum pop cans every year. Americans throw away enough aluminum every 3 months to rebuild our country's entire commercial air fleet.
- **There is no limit to the number of times aluminum can be recycled.** It takes 90 days after collection, re-melting, rolling, manufacturing, and distribution of recycled aluminum beverage cans to be back on the grocer's shelf.



P.O. Box 399 Pleasanton, CA 94566 • 3110 Busch Road, Pleasanton CA, 94566 • (925) 846-2042

[www.PleasantonGarbageService.com](http://www.PleasantonGarbageService.com) • [info@pleasantongarbage.com](mailto:info@pleasantongarbage.com)



Find us on Facebook: [facebook.com/pleasantongarbage.com](https://facebook.com/pleasantongarbage.com)