



Happy New Year

All of us at Pleasanton Garbage Service wish everyone a happy and healthy New Year. We appreciate your support and look forward to serving you. Please visit our website or call our customer service department if we can be of assistance to you.

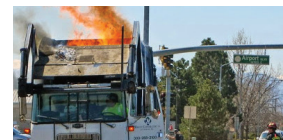


2020 is going to be a great year... Please Remember...



Items going in your recycling cart should be empty, clean and dry, and free of food and liquids. Please help us ensure that your recyclable materials end up getting processed. Thank you for your help.

Never put any kind of rechargeable (lithium) battery in the trash, recyclable or greenwaste cart! This includes any type of electronic devices. They cause fires that endanger you and our employees



When kids come out to play...



Caution kids to stay 50 feet away from the back of our trucks for their safety



Textile recycling services provided by USAgain.

Look for Textile containers to put your cloth and leather goods in to further divert more items away from the trash... Not only are these items recycled for a further use it dramatically reduces the percentage of waste that goes into our landfills.

At the Fairgrounds please look for our recycling containers.... save a glass container, a bottle or a can. So many recyclables get put in the trash... Please help us recycle while you are having fun.



We want our service to be the best, and you can help

Garbage Carts Please place your cart at the curb edge with **at least 3 feet of clearance** from other objects, including other carts, basketball hoops and motor vehicles. Make sure your cart lid is down completely. Thank you for helping us provide you with the best possible service. Together we can keep our neighborhoods safe and clean.

Please — no dirt, rocks, batteries, fluorescent lights, sharps or overloading — lids must be closed to prevent spills.



Recycling Cart Acceptable List Paper, cardboard, aluminum containers and foil, steel or tin cans, glass bottles and jars, plastic bottles and tubs (such as yogurt, margarine and cottage cheese, numbers ♻️ through ♻️).

Recycling Cart Non-Acceptable List No plastic bags, wrapping film, wire and string, waxed paper containers, foam packaging, paper towels & napkins, food soiled paper & cardboard, aerosol cans and diapers.

Greenwaste Cart Acceptable List Grass and weed clippings, shrubs and tree prunings (less than 4" in diameter), leaves, plants and flowers, food scraps and food soiled paper products.

Greenwaste Cart Non-Acceptable List No plastic bags, wrapping film, no household garbage. **No dirt or rocks.**
No overloading — lid must be closed to prevent spills.

In 2020 Lets Stop, Think and Recycle...



Stop



Think



Recycle

Items that State Laws prohibit from being thrown in the trash.



A great resource to find out where to properly dispose of these items that contain hazardous wastes is www.Stopwaste.org. Search the “Recycle Where?” widget for Alameda County Hazardous Waste facilities drop-off disposal locations near you.

Batteries can be recycled at all Alameda County Hazardous Waste facilities. Stockpile spent batteries in a 2- or 5-gallon bucket and store spent batteries in a cool dry place. Bring them to a hazardous waste facility or other drop-off location when the bucket is full.

Nearly everyone uses household chemicals to paint, clean, and maintain our homes, gardens and yards. But many of these products can be toxic if they're used or disposed of improperly. Left over hazardous waste or fluorescent light bulbs should never be thrown in the trash or recycling bin. Never flush chemicals down the toilet or dump down the drain or storm sewer. Please bring them to your local Household Hazardous Waste Facility.

Needles and other sharps – including prefilled syringes, EpiPens, and other ready to inject medications are accepted at the household hazardous waste facilities. These items must be packaged in approved sharps containers made with puncture and leak-resistant plastic.

Electronic waste has been banned from the trash. Electronic waste includes devices that contain concentrations of metals (lead and copper) high enough to make them hazardous when they are discarded.

Examples of electronics that contain toxic chemicals are: Televisions: tubes, flat screens, plasmas, or projectors, computers, monitors, cathode ray tubes and devices containing CRT's keyboards, mice, and computer peripherals. Telephones, cell phones, and answering machines. Stereo equipment, radios, tape players, VCRs, CD/DVD players, and phonographs. Microwave ovens, Thermostats, ballasts for fluorescent lamps, digital clocks and MP3 music players, digital cameras and video cameras.

Electronic waste can be brought to the Pleasanton Transfer Station for proper recycling.



Please do not place recyclable items in plastic bags. Recyclable items should be placed loose in your recycling cart. Plastic bags are not accepted in our recycling program and when placed in the recycling cart will cause our sorting equipment to jam.



Plastic Bags, Wire and String Jam Recycling Equipment